

Reset or Restart TI-Nspire™ CX Handhelds

If your TI-Nspire CX or TI-Nspire CX CAS calculator will not turn on or function properly you may want to reset or restart the calculator.

The quickest way to get the CX and CX-CAS handheld units to restart is via the reset button on the back of the calculator. Documents saved in the My Documents folder will remain, however if the current active file is not yet saved, it will be lost.



Basic Reset and Restart:

Use a pen or stylus to press and hold the reset button on the back of the calculator. When the button is released the operating system will reload.

**Note:* If the calculator does not automatically restart then press and hold the ON key to reload the operating system.

Complete Reset: Maintenance Menu – Delete Operating System

Sometimes it is desirable to delete all files from My Documents or completely erase the operating system from the calculator. The maintenance menu provides a number of options when the calculator is restarting. **BEFORE** using this menu, ensure you have access to an equivalent TI-nspire handheld device, Computer Link software or TI-Nspire software and appropriate USB cable(s). If the operating system is removed the calculator **MUST** have access to another platform that contains an appropriate operating system.

Step 1:

- Press and hold Doc, Enter and EE keys then press and release the reset button. (A second pair of hands is useful here.) Keep holding the three keys as the calculator restarts. The maintenance menu will be displayed during the start-up process.

**Note:* If the calculator does not automatically start after following the above steps, then press and hold Doc, Enter and EE keys and then press and release the On key. The maintenance menu will be displayed.



Step 2:

Option 1 in the maintenance menu returns the same result as pressing the reset button only. Option 2 will completely remove the operating system; it will then need to be reinstalled.

Option 3 removes all documents from the My Documents folder and then restarts.

Option 4 deletes all documents and the operating system; a new operating system is needed.

- To completely remove the operating system, select option 2.

Step 3:

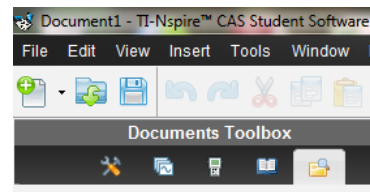
- Confirmation that the operating system is to be deleted needs to be confirmed. Press '1' to confirm, any other key or a time-out will abort and the calculator will restart.

After pressing "1" the operating system will be deleted.



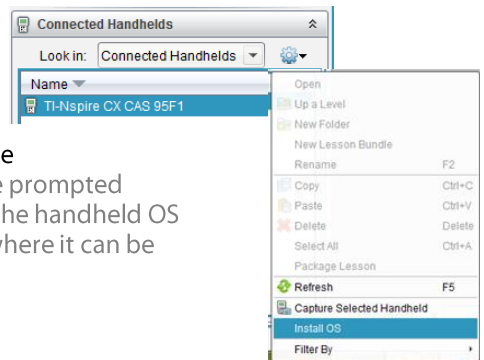
Step 4:


- Connect the TI-Nspire handheld to the computer and launch the TI-Nspire software. Select the “Content Explorer” tab, located under the Documents Toolbox.



Step 5:

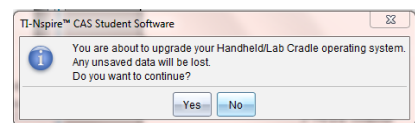
- Under Connected Handhelds, click on the handheld to highlight. Then click on the pull down menu next to the “cog” image and select **Install OS**.



Locate the operating system on your computer or download it from the website: <http://education.ti.com/aus-nz/softwareupdate> (*You will be prompted to select your calculator and software before being able to download the handheld OS  **Download TI-Nspire CX CAS Handheld OS v4.2** Save this file on your computer where it can be easily found. This file cannot be opened on your computer.)

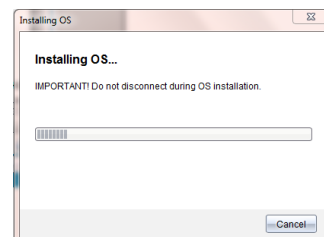
Step 6:

- A warning message is displayed, “You are about to upgrade your...” click Yes.



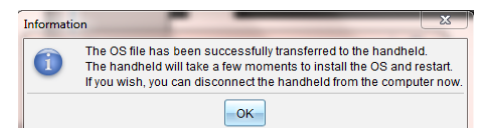
Step 7:

- The progress of the update is monitored. **Do not disconnect the handheld during the upgrade process.**



Step 8:

- When the OS has been successfully transferred onto the calculator you will see this message. Click OK.



Step 9:

- Once the calculator restarts, complete the prompts to personalise your settings.

